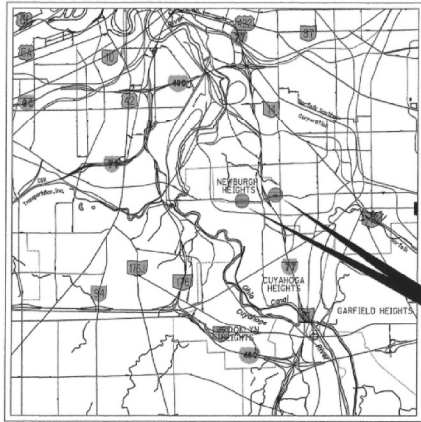


\\TMS-88511\Main\Projects (07\2015)\15-103 CA150 USA, Inc. - Traffic Control Design - Harvard Avenue Speed Camera Installation - New15-103T001.dwg - Sep 08, 2015 - 8:26:16am Plotted By: Jranitz



LOCATION MAP

LATITUDE: 41°26'49.4" LONGITUDE: 81°39'27.1"

SCALE IN MILES



- PORTION TO BE IMPROVED
- STATE ROADS
 - INTERSTATE
 - OTHER ROADS

UNDERGROUND UTILITIES
 CONTACT BOTH SERVICES
 CALL TWO WORKING DAYS
 BEFORE YOU DIG

CALL
 1-800-392-2764
 (TOLL FREE)

OHIO UTILITIES PROTECTION SERVICE
 NON-MEMBERS
 MUST BE CALLED DIRECTLY

OIL & GAS PRODUCERS UNDERGROUND
 PROTECTION SERVICE CALLS-800-925-0988

PLAN PREPARED BY:

TMS Engineers, Inc.
 2112 CAGE PARKWAY SOUTH, UNIT 7
 TWINSBURG, OHIO 44097
 (330) 650-6402 (330) 650-6417 FAX

SPEED CAMERA ENFORCEMENT

HARVARD AVENUE VILLAGE OF NEWBURGH HEIGHTS CUYAHOGA COUNTY

PROJECT LOCATIONS

INDEX OF SHEETS

TITLE SHEET	_____	1
GENERAL NOTES	_____	2
SPEED CAMERA PLANS	_____	3-4
SPEED CAMERA MISCELLANEOUS DETAILS	_____	5

PROJECT DESCRIPTION

THIS PROJECT CONSISTS OF THE INSTALLATION OF TWO (2) NEW SPEED ENFORCEMENT CAMERAS NEAR THE INTERSECTIONS OF HARVARD AVENUE & 42ND STREET AND HARVARD AVENUE & 52ND STREET IN THE VILLAGE OF NEWBURGH HEIGHTS, OHIO.

2013 SPECIFICATIONS

THE STANDARD SPECIFICATIONS OF THE STATE OF OHIO, DEPARTMENT OF TRANSPORTATION, INCLUDING CHANGES AND SUPPLEMENTAL SPECIFICATIONS LISTED IN THE PROPOSAL SHALL GOVERN THIS IMPROVEMENT.

I HEREBY APPROVE THESE PLANS AND DECLARE THAT THE MAKING OF THIS IMPROVEMENT WILL NOT REQUIRE THE CLOSING TO TRAFFIC OF THE HIGHWAY AND THAT PROVISIONS FOR THE MAINTENANCE AND SAFETY OF TRAFFIC WILL BE AS SET FORTH ON THE PLANS AND ESTIMATES.

Approved _____
 Date _____ Village of Newburgh Heights, Mayor

STANDARD ODOT CONSTRUCTION DRAWINGS

MT-95.31	7-18-14	TC-81.10	10-18-13		
MT-95.32	7-18-14	TC-83.10	1-17-14		
		TC-83.20	1-16-15		
		TC-85.10	10-18-13		

Michael Schuckart
 9/19/15
 SIGNATURE DATE

RAILROAD INVOLVEMENT

NONE



NO.	REVISION	DATE	BY

TMS ENGINEERS INC.
 2112 CAGE PARKWAY SOUTH, UNIT 7
 TWINSBURG, OHIO 44097
 (330) 650-6402 (330) 650-6417 FAX

NEWBURGH HEIGHTS
 TITLE SHEET

15-103

1 OF 5

SERVICE AND SUPPORTS.
 OR GREEN WITH YELLOW STRIPE(S), FOR
 MAY ALSO BE BLACK WITH GREEN TAPE/
 S POINTS.
 INDUIT WILL BE USED IN FOUNDATIONS AND
 NG CONDUCTOR (GROUND WIRE) RACEWAY
 ALLIC CONDUIT BE USED, BOTH ENDS OF
 THE GROUNDING CONDUCTOR.
 OR (GROUND WIRE) SHALL BE 4 AWG
 TCH.
 THE GROUNDING CONDUCTOR (GROUND
 H NEUTRAL (AC-) BAR TO THE GROUND
 PLICED CONDUCTOR. IF SPLICED, IT SHALL
 CE.
 L ONLY BE CONNECTED TO GROUND AT THE
 CT SWITCH.
 HES ARE CONNECTED AFTER THE PRIMARY
 L (AC-) SHALL ONLY BE GROUNDED AT
 T GROUNDING CONDUCTORS SHALL BE
 , BUT SHALL BE GROUNDED AT BOTH
 ES.
 ED TO COMPLETE THE EFFECTIVE GROUND
 INCIDENTAL TO THE CONDUCTORS

	NEWBURGH HEIGHTS, OHIO GENERAL NOTES	TMS ENGINEERS INC 2112 GAGE PARKWAY SOUTH, UNIT 7 TWINSBURG, OHIO 44087 (330) 686 - 6402 (330) 686 - 6417
2	OF	5
	15-103	

URCE, EX. UTILITY

8.9, 22.4' RT.

BY POWER COMPANY

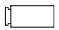

VERHEAD SERVICE CABLE, FURNISHED:

RVICE AND SPEED CAMERA

ESTAL, FOUNDATION,

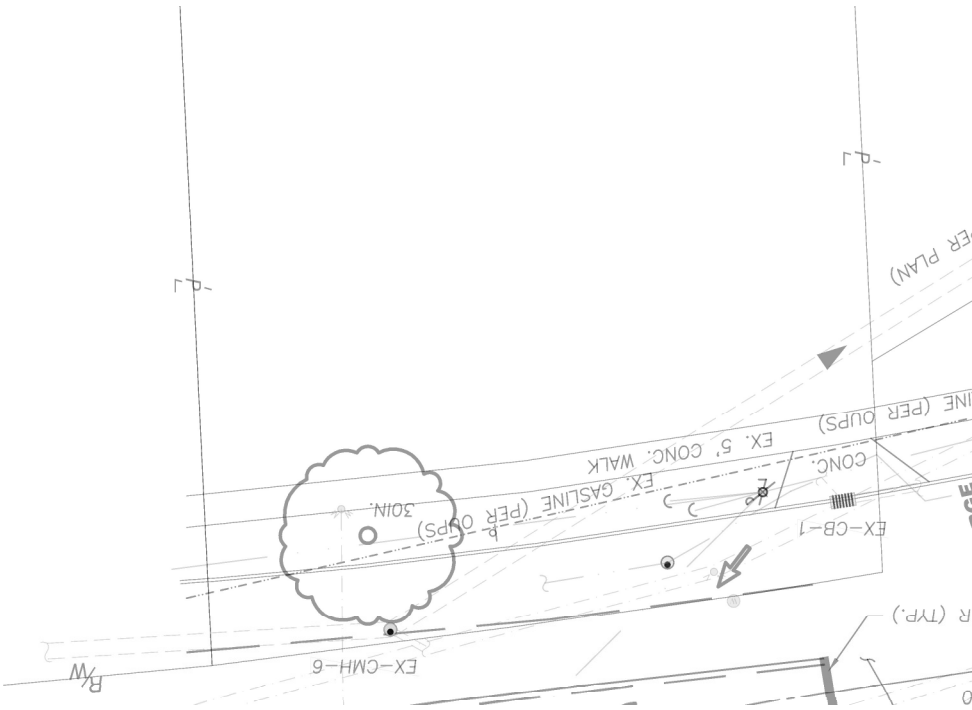
44, 23.5' RT.

LEGEND
PROPOSED

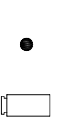
-  CAMERA HEAD (PLAN)
-  PEDESTAL POLE, WITH TRANSFORMER BASE

NEWBURGH HEIGHTS, OHIO
HARVARD AVENUE
(3700 BLOCK)

TMS ENGINEERS INC
2112 GAGE PARKWAY SOUTH, UNIT 7
TWINSBURG, OHIO 44087
(330) 686 - 6402 (330) 686 - 6417



LEGEND
PROPOSED



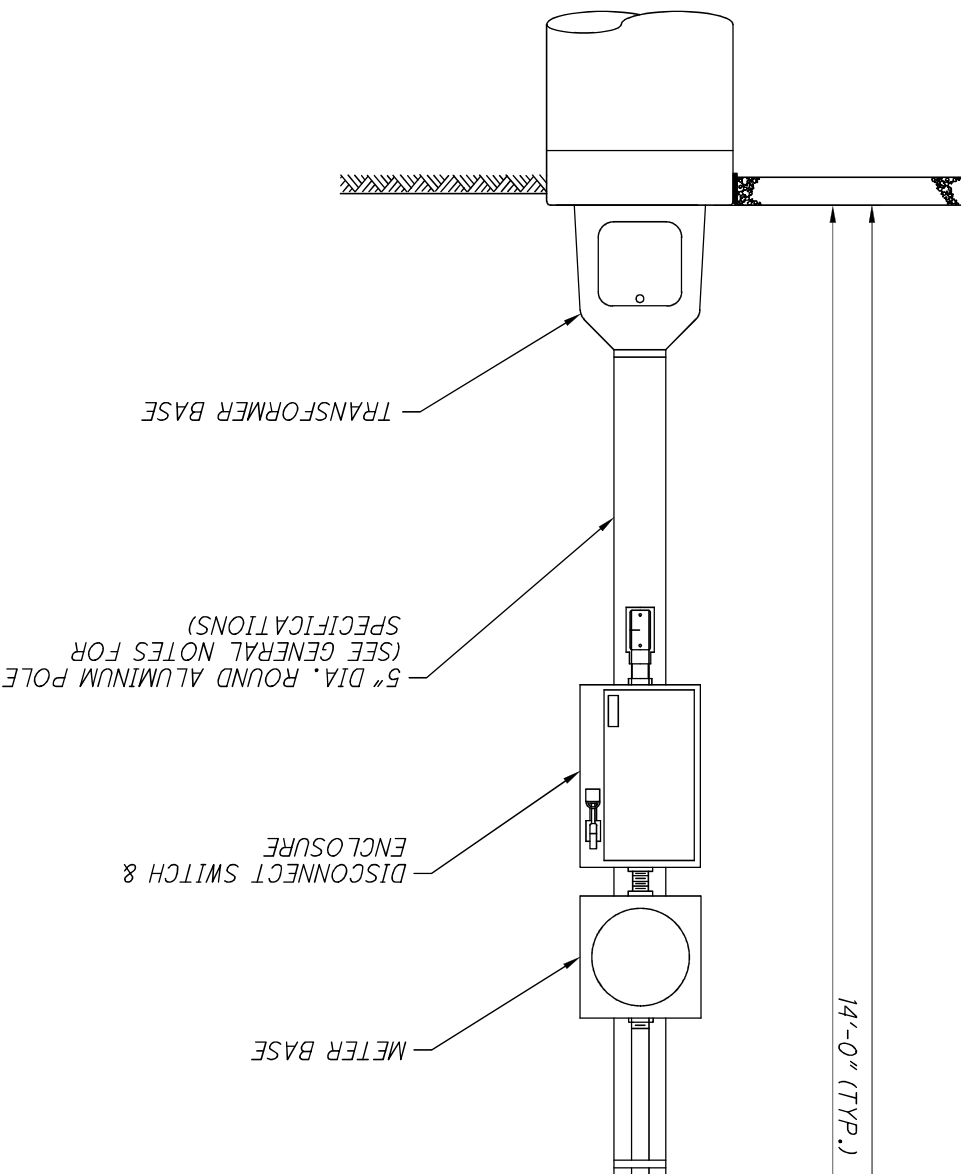
PEDESTAL POLE, WITH
 TRANSFORMER BASE

CAMERA HEAD (PLAN)

NEWBURGH HEIGHTS, OHIO
 HARVARD AVENUE &
 52nd STREET

TMS ENGINEERS INC
 2112 GAGE PARKWAY SOUTH, UNIT 7
 TWINSBURG, OHIO 44087
 (330) 686 - 6402 (330) 686 - 6417

TYPICAL SPEED CAMERA POLE DETAIL
NOT TO SCALE



5	OF	5
15-103		
NEWBURGH HEIGHTS		
MISCELLANEOUS DETAILS		
TMS ENGINEERS INC		
2112 GAGE PARKWAY SOUTH, UNIT 7		
TWINSBURG, OHIO 44087		
(330) 686 - 6402 (330) 686 - 6417		